

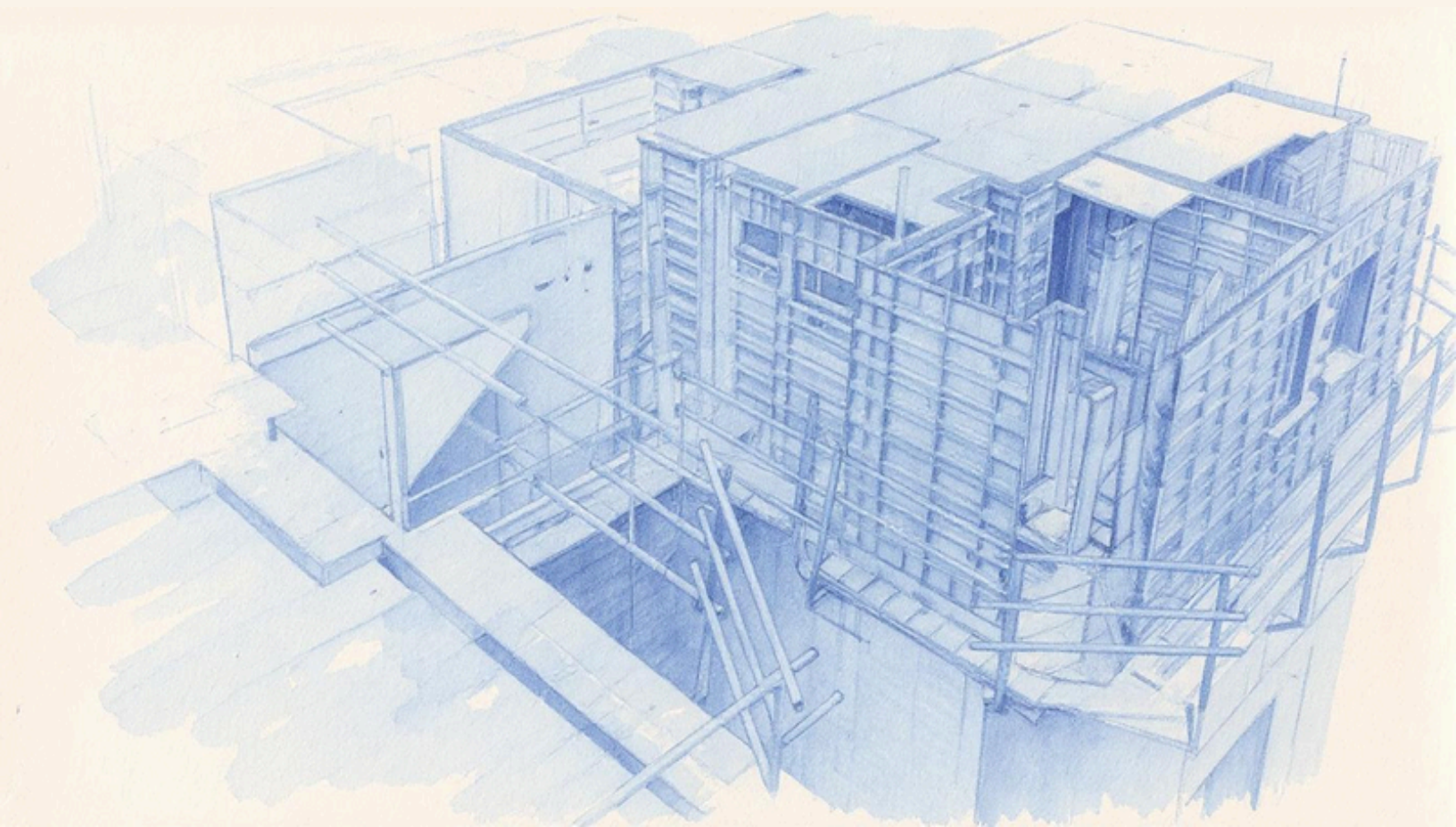


SILVER EDGE
Formwork Pvt. Ltd.



BUILD

FASTER. SMARTER. BETTER.



SILVER EDGE FORMWORK PVT. LTD.

Table of Contents

• Preface	01
• Our Values	02
• Global-Grade Expertise in Formwork Efficiency	03
• About BDAS - Buildable Design Appraisal System	04
• Technical Support	05
• Properties	07
• Construction Cycle	08
• Manufacturing Process	10
• Construction Sequence	11
• Formwork Components	13
• Reusable Aluminium Formwork	17
• Projects	19

Your Formwork Exp



SILVER EDGE
Formwork Pvt. Ltd.

**Your
Formwork
Expert**

 **+91 99588 37507**

 www.silveredgeformwork.co.in



Formwork Expert Y



Welcome to **Silver Edge Formwork Pvt. Ltd.** - a trusted partner in delivering advanced formwork solutions for the construction industry. We specialize in providing high-quality aluminium formwork systems that ensure the smooth, safe, and efficient execution of concrete structures.

Formwork is a vital part of any concrete project, serving as the structural backbone during construction. With our engineering expertise and unwavering commitment to excellence, we support developers and contractors in achieving their project goals - all while maintaining the highest standards of **safety, speed, and reliability**.

OUR VALUES

At **Silver Edge**, our foundation is built on strong core values that guide every aspect of our work and future growth. These values shape our identity, influence our decisions, and define how we serve our clients, partners, and communities.

- **Safety First:** We prioritize the well-being of our workers, clients, and communities with an uncompromising commitment to safe practices across all projects.
- **Excellence Always:** We hold ourselves to the highest standards, continuously striving to exceed industry benchmarks through innovation and quality.
- **Integrity & Accountability:** We believe in transparent communication, dependable delivery, and honoring our commitments.
- **Client-Centric Approach:** Every formwork system we deliver is tailored to the client needs, ensuring maximum efficiency and satisfaction.

By staying true to these principles, we aim to deliver formwork solutions that don't just meet expectations - they set new ones.



Vivek Kumar Singh
Co-Founder



Madhumeet Sharma
Co-Founder



SILVER EDGE
Formwork Pvt. Ltd.

Global-Grade Expertise in Formwork Efficiency

At Silver Edge Formwork, our leadership team brings hands-on experience with **Band 2 efficiency rating** and a total score of 14 points under the Buildable Design Appraisal System (**BDAS**) - a rigorous assessment conducted by the Building and Construction Authority (**BCA**) of Singapore.

This score reflects the highest banding awarded for both vertical and horizontal integrated small-panel formwork systems, signifying our team's capability to deliver highly efficient and constructible formwork solutions.

WALL PANEL

STANDARD SLAB PANEL

ADJUSTABLE STEEL PROP

FLAT TIES & PVC SLEEVES



SILVER EDGE
Formwork Pvt. Ltd.

About BDAS - Buildable Design Appraisal System

The **BDAS** was developed to measure how effectively a building's design can optimize labour usage and construction productivity. It **assigns** one of five **bands** to vertical and horizontal formwork systems, each with different point values based on their real-world performance.

Banding is determined through productivity trials conducted by certified formwork suppliers or contractors and formally witnessed by **BCA** representatives - making it one of the most respected **benchmarks** in the global construction industry.

STANDARD PROP HEAD (PH)



MIDDLE BEAM (MB)



BEAM BOTTOM PANEL (BB)



EXTERNAL CORNER ANGLE (ECA)



SILVER EDGE
Formwork Pvt. Ltd.

Technical Support

Our Engineering Department is staffed by a highly qualified and experienced team of professionals who are equipped to provide comprehensive technical advice and support across **every stage of your project**.

Silver Edge is among the few aluminium formwork companies in India using advanced Aluminium Formwork Software to create precise shell drawings, setting drawings, and production drawings. This allows us to eliminate mismatches in standard as well as non-standard panels and ensures the delivery of formwork in the exact shapes and sizes needed by the client.

Our engineers provide a complete suite of services, including:



ENGINEERING DESIGN

We conduct detailed site surveys and offer expert recommendations based on your project needs. Our team prepares shell and shop drawings, along with technical consultations to help clients understand system requirements. Once finalized, detailed fabrication and layout drawings are created to ensure seamless on-site installation.

PRODUCTION

All Silver Edge formwork products undergo strict quality checks throughout the manufacturing process. Our production team ensures high precision and timely delivery, aligning with your construction timelines and quality expectations.



TRAINING PROGRAMME

We provide structured on-site training to help your team understand the formwork system. From interpreting panel drawings to system assembly, our training ensures your workforce is confident and efficient in execution.

ON-SITE SUPERVISION

Before materials reach your site, our supervisors visit in advance to prepare the location and coordinate setup requirements. Our experts remain on-site during the initial cycles to guide your team through system installation and proper handling.



USED ALUMINIUM FORMWORK PROVIDER

Looking for cost-effective formwork without compromising on performance? Silver Edge offers certified used aluminium formwork systems that are refurbished, inspected, and ready for deployment. These are ideal for budget-conscious projects or contractors seeking quick turnarounds without long production lead times.

Benefits:

- Budget-friendly alternative
- Fully functional & structurally tested
- Immediate availability
- Environmentally sustainable reuse

SILVER EDGE FORMWORK

ALL IN ONE SYSTEM

QUALITY & DURABILITY

SPEED

COST REDUCTION

REDUCED NO. OF
SKILLED WORKERS

SPEED: Accelerate Your Construction Projects

Experience unparalleled efficiency with our monolithic system. Construction speed significantly increases, allowing you to build a single floor in approximately 8 - 10 days. Compared to conventional methods, contractors can expect to double or even triple their output with the same number of workers when transitioning to our advanced aluminum formwork system.

COST REDUCTION: Smart Savings, Superior Results

Our aluminum formwork system boasts exceptional ease of assembly, eliminating the need for highly skilled labor. The monolithic concreting process results in crack-free structures, significantly reducing future repair costs. Furthermore, the high repetitive usage of our system ensures substantial initial cost savings, delivering a remarkable return on investment.

QUALITY & DURABILITY: Built to Last, Flawless Finish

Crafted from premium Aluminum alloy (A6061-T6), our material guarantees impressive repetitive use, enduring up to 200 cycles. The smooth surfaces and precise dimensional accuracy of our panels mean that plastering and remedial work are often unnecessary after concrete casting, ensuring a superior, ready-to-finish structure every time.

REDUCED NO. OF SKILLED WORKERS: Simplify Your Workforce

The simplicity and convenience of our aluminum formwork system mean it can be assembled manually, without the need for heavy machinery. Even non-skilled construction workers can master the system with just a simple half-day training session, streamlining your labor requirements and increasing operational flexibility.

ALL IN ONE SYSTEM: Versatility and Sustainability

Our Aluminum Formwork system offers a comprehensive range of applications, from robust wall formwork and horizontal floor slabs to sturdy columns, beams, and stairs. Beyond its versatile functionality, it boasts a high recycling value, making it an environmentally friendly and safe choice for your construction needs.

PROPERTIES

The Foundation of Superior Construction

SILVER EDGE FORMWORK PVT. LTD. SYSTEM

At **Silver Edge Formwork**, we understand that a successful structural build hinges on the quality of its formwork system. That's why we are committed to providing you with the most reliable, secure, efficient, and cutting-edge formwork technology available in the market. **Choose Silver Edge for a foundation of excellence in every project.**

Technical Specifications

Our advanced Aluminum Formwork System is engineered for optimal performance and durability.

Material	Specification	
Aluminium Alloy (A6061 - T6)	Special gravity	2.7
	Allowable bending stress	1250 kg/cm ²
	Young's modulus	7 X 10 ⁵ kg/cm ²
Composition	Inner / Outer wall panel and Corner panel	
	Slab panel with support	
	Inner / Outer slab corner with beam panel	
Alloy Temper	Temper T6	
Material Type	Complete Extrusion	
Standard Panel Width	75mm to 600mm	
Side Rail Width	65mm	
Panel Height	Standard panel - 2400 mm X 600 mm 2050 mm X 600 mm	
	Slab panel - 1200 mm X 600 mm	
Welding	Friction Welding, Mig Welding	
Weight of Alluminium Panels	21.5 kg/mtr ² (+/- 0.5kg)	
Thickness of Panel	3.8 mm to 4 mm thick for contact surface area & 8 mm for side rail	
Standard Props	Adjustable Steel Props	

THE SILVER EDGE ADVANTAGE: A Clear Comparison

Discover why Silver Edge Formwork is the superior choice for modern construction, outperforming traditional and other modular systems across key performance indicators.

Formwork Characteristics	Tunnel	Table	Traditional	SILVER EDGE Formwork
No skilled labour required				●
Suitable for one or two-story building	●	●	●	●
Suitable for high-rise buildings			●	●
No cranes or other heavy-equipments required				●
Able to pour all walls, beams, columns, slabs, and staircase in one pour				●
Able to form all concrete elements			●	●
Strike floor slab formwork without moving props and prop heads				●
Conforms to architectural design with no modification; ensures precise, accurate results			●	●
Self-correction feature providing unmatched forming accuracy				●
Environmental friendly - no huge debris, no messy disposals				●

08 Days

Construction Cycle



01

Wall Marking & Reinforcement

02

Vertical Formwork Erection

03

Slab and Stairs Formwork Setting

04

Slab Reinforcement

05

Electrical & Plumbing Work

06

Overall Inspection & Concrete Pouring

07

De-shuttering Vertical Formwork

08

De-shuttering Slab & Beam Panels Upper Level Reinforcement

PREPARATION BEFORE INSTALLATION

Ensuring a Flawless Start

Before beginning installation, meticulous preparation is key to a successful build. Follow these essential steps:

- **Accurate Layout:** Set up all lines precisely according to the structural drawings.
- **Component Verification:** Thoroughly check and assess all components of the formwork system.
- **Residue Removal:** Conduct intensive cleaning to remove any concrete residues from panels and accessories used in previous projects.
- **Optimal Lubrication:** Apply sufficient form oil to all panels to ensure smooth release.
- **Safety Briefing:** Conduct a comprehensive safety and installation brief for the entire site team.

PRE-CHECK BEFORE CONCRETE CASTING

Verifying Readiness

Prior to concrete casting, a detailed pre-check is crucial to prevent errors and ensure structural integrity.

- **Position Confirmation:** Double-check the precise position of all walls and columns against the set-up markings.
- **Level Verification:** Confirm both the vertical and horizontal levels of all walls and slabs.
- **Secure Fastenings:** Ensure all pins, wedges, and ties are properly tightened.
- **Dimension Confirmation:** Verify all opening dimensions are accurate.
- **Support Inspection:** Thoroughly inspect the height and integrity of all support structures.
- **Stability Bracing:** Confirm adequate bracing is in place to guarantee stability during casting.

MONITORING DURING CASTING

Maintaining Quality

Continuous monitoring during the concrete casting process is vital for achieving optimal results and preventing issues.

- **Controlled Pouring:** Ensure concrete pouring is evenly distributed throughout all wall sections before commencing to cast slab areas.
- **Leakage Detection:** Continuously monitor for any concrete slurry leakage.
- **Immediate Clean-up:** Promptly remove and clean all excess concrete that adheres to the back of the formwork panels.



SILVER EDGE
Formwork Pvt. Ltd.

BUILD

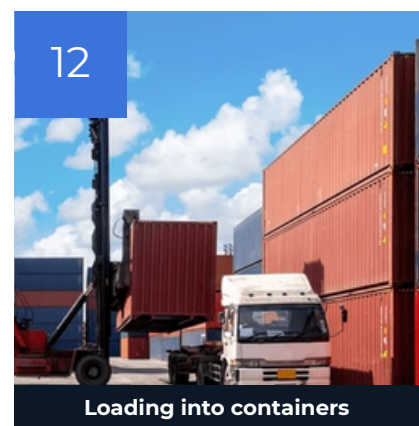
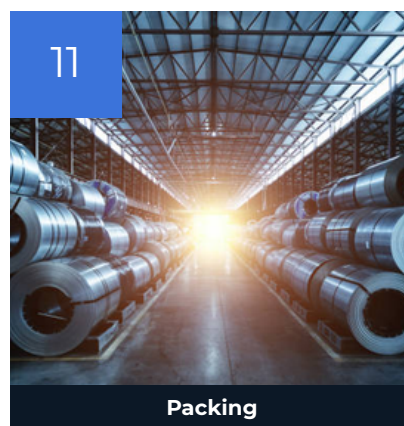
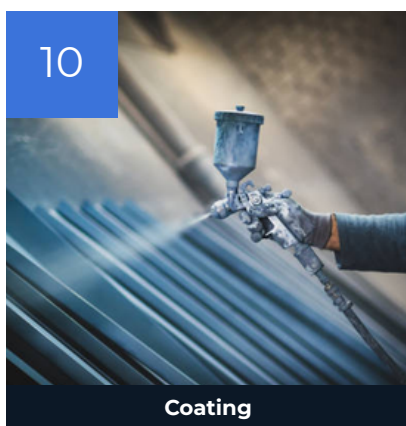
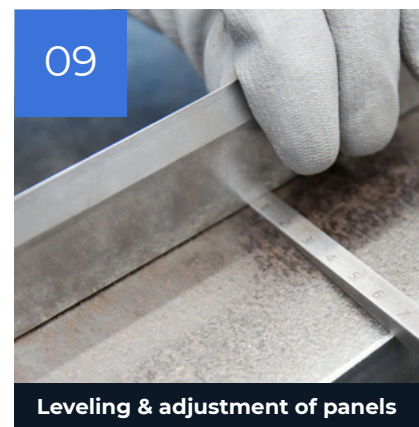
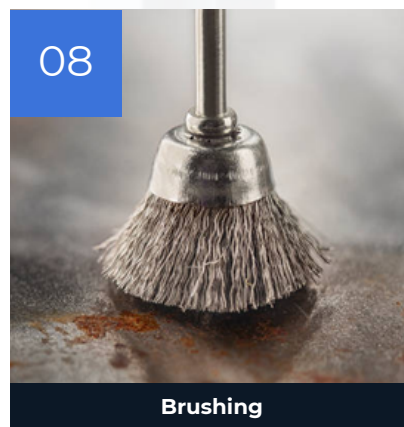
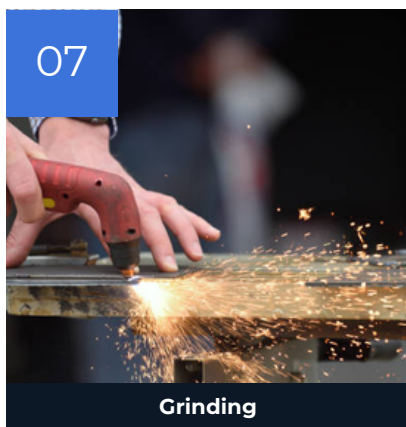
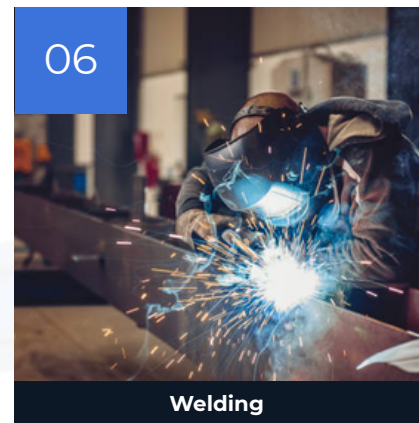
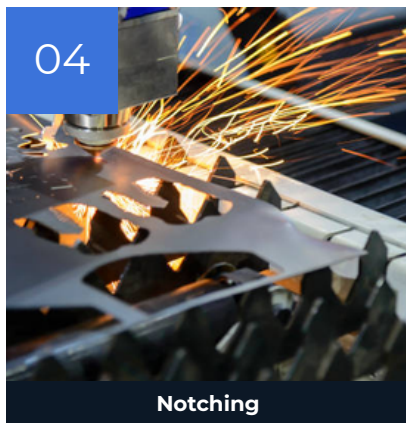
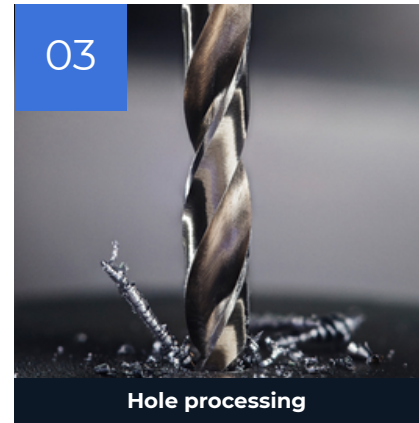
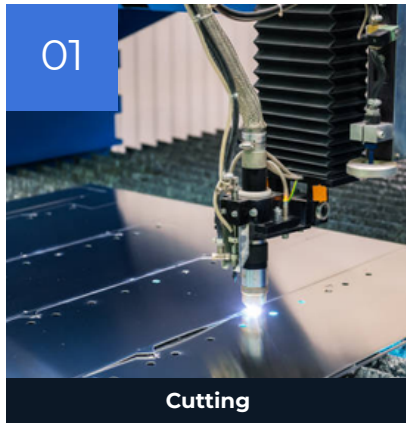
FASTER. SMARTER. BETTER.

up to

3x

**Faster
Construction**

Manufacturing Process



Construction Sequence

01



CONCRETE LEVELING SURVEY

The concrete level must be surveyed and verified before formwork installation to ensure the final concrete structure is perfectly level.

02



STRUCTURAL LINE / OFFSET LINE

After verifying the slab's leveling, the structural and offset lines must be marked according to the structural drawings.

03



VERTICAL REBAR (ME & PLUMBING)

Once the initial setup is complete, wet works—including the installation of vertical rebar, mechanical, electrical, and plumbing (MEP) systems are carried out.

04



WALL & BEAM PANELS INSTALLATION

The setup begins with the positioning of the internal corner (I/C) and wall panels, which must first be coated with a sufficient quantity of form release oil.

05



STAIRCASE & LIFT CORE

Materials for the staircase and lift core must be segregated from general stock and installed according to the detailed staircase shop drawings.

06



SLAB PANEL

Slab beams are positioned to support the slab formwork. The components are secured by inserting long pins through two adjoining beams, with a slab panel situated between them.

07



BOTTOM & TOP (ME & PLUMBING)

After the deck formwork is established, a second check of the wall conduits is performed before securing the rebar and the mechanical and plumbing systems.

08



KICKER SETTING

Kickers are installed at the base of continuous vertical walls, such as the building's external walls. They provide a concrete "starter" that serves as a guide for aligning the vertical wall formwork.

09



SOLDIER INSTALLATION

A set of soldiers, with a standard pipe length of 900 mm, is installed to ensure the proper alignment of the kicker.

10



FORMWORK LEVEL CHECKING

The verticality of the formwork must be checked from the internal corner (I/C) to the external corner. This verification step minimizes errors and reduces the need for corrective work to control deviations.

11



CONCRETE POURING

Concrete is poured and distributed evenly throughout the wall panels first, before proceeding to cast the slab-level areas.

12



STRIPPING WALL / COLUMN PANELS

The first panel on a newly cast wall is typically the most challenging to strip. For easier removal, a worker inserts the spigot of a panel-puller tool into the bottom hole of the panel's side rail.

13



STRIPPING BEAM PANELS

All pins and wedges are removed from the side section of the beam formwork to begin the stripping process.

14



STRIPPING SLAB PANELS

After removing all pins and wedges from the top of the slab, all slab panels, edge beam (EB) panels, and main beam (MB) panels can be easily dismantled.

15



FLAT TIES & PVC SLEEVES

Flat ties are used to maintain the correct wall and column thickness during concrete pouring. PVC sleeves are installed around the ties to facilitate their subsequent removal using specialized tools.

16



KICKER PANELS

The wall panels are removed by detaching the lower kicker from the adjacent formwork. They are then cleaned and prepared for reuse.

17



CLEANING PANELS

All formwork components must be cleaned with scrapers immediately after being removed. Delaying this process will make cleaning significantly more difficult and time-consuming.

18



TRANSFER PANELS

All panels are transferred to the next level through a designated cut-out in the slab. This opening is later filled with concrete.

FORMWORK COMPONENTS

Engineered for Precision and Efficiency



Standard Wall Panel: The Backbone of Your Structure

Our Standard Wall Panels create a flawless concrete face and are engineered for maximum on-site efficiency. The integrated stiffeners are meticulously designed to ensure the panels are lightweight yet robust, allowing for easy handling and lifting by a single worker. The seamless, single-piece width construction-fabricated without any mid-welding-guarantees superior strength and a premium finish for every pour.

Item Description	Dimension
Standard Wall Panels	600 mm×2400 mm *H 450 mm×2400 mm *H 200 mm×2400 mm *H 175 mm×2400 mm *H

*The panel height (H) is customizable based on your project's specific design requirements, available in standard or single panel heights.



Standard Internal Corner Panel: For Flawless Right Angles

Achieve perfect, seamless internal corners every time. This specialized component connects two perpendicular wall panels, elegantly covering the joint to create a clean, sharp, and structurally sound 90-degree angle.

Item Description	Dimension
Standard Wall in-corner Panels	(100+100) mm×2450 mm (100+125) mm×2450 mm * (100+150) mm×2450 mm * (100+175) mm×2450 mm *

*Custom sizes are available to meet unique project design requirements.

Essential Connecting Components



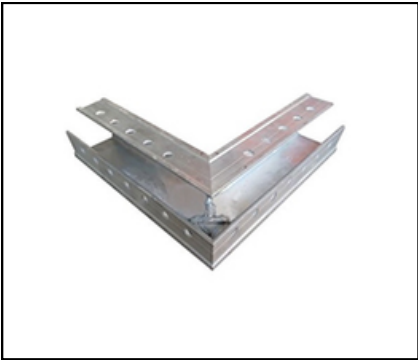
Joint Bar

A crucial linking component designed to securely connect prop heads with the C-profile of our end beams, ensuring total structural stability and precise alignment of the formwork system.



Slab Internal Corner

Provides a seamless & robust connection between an internal wall panel & a slab panel. This component creates a clean & structurally sound corner on the inside of the structure. (Dimensions are tailored to your specific structural design.)



Slab External Corner

Expertly engineered to form a strong and precise connection between an external wall panel and a slab panel. This ensures a durable, crisp, and weather-resistant outer corner. (Dimensions are tailored to your specific structural design.)

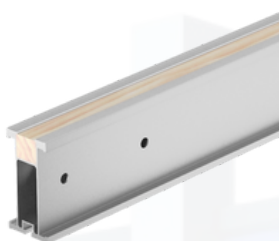
SLAB COMPONENTS

Building Strong, Level Slabs with Ease



Standard Slab Panel
The foundation of a perfect slab, our Standard Slab Panel is engineered to sustain the full weight of wet concrete during pouring. It provides a smooth, reliable horizontal surface for casting, ensuring a high-quality finish. These panels are designed to fit securely between two adjacent slab beams for optimal stability.

Item Description	Dimension
Standard Slab Panels	600 mm×1200 mm
	450 mm×1200 mm
	200 mm×1200 mm
	175 mm×1200 mm



Slab Length Beam
An essential connector component, the Slab Length Beam joins wall and slab panels, providing critical support for wet concrete during pouring and casting. Its robust design ensures structural integrity where different formwork elements meet.

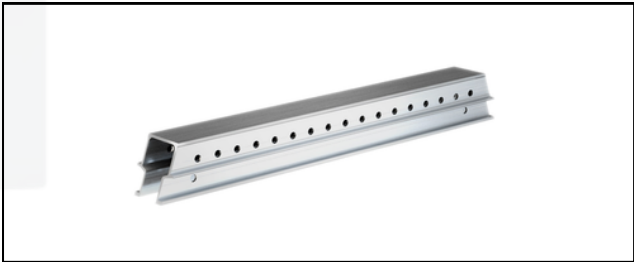
Item Description	Dimension
Standard Slab Panels	(125mm+300mm)×L*
	(150mm+150mm)×L*
	(125mm+75mm)×L*

The specific length (*L) is determined by your project's unique design requirements.

Primary Support System



Prop Head (PH) **Size: 150×300 mm**
The primary support interface for our beam system. The Prop Head securely joins Middle and End beams, while a pipe support is placed directly underneath it to transfer the slab load safely to the structure below.



Middle Beam (MB) **Sizes: 150×900 mm | 150×1050 mm**
Forming the main support grid, the Middle Beam connects to the Prop Heads and directly carries the load from the slab panels. Its durable construction ensures minimal deflection and a level slab.



End Beam (EB) **Sizes: 150×600 mm | 150×900 mm | 150×1050 mm**
Designed for the perimeter of the slab formwork, the End Beam connects Prop Heads and provides robust edge support for the slab panels, ensuring a clean and secure boundary for the concrete pour.



Special Prop Head **Depends on requirement**
A problem-solving component for complex layouts. The Special Prop Head is used to join beams in locations where a standard Prop Head cannot be installed due to structural conflicts or unique geometries.

FORMWORK COMPONENTS

Pins, Ties, and Supports

Connecting & Locking Components



Wedge & Round Pin

The fundamental locking mechanism of our system. The Round Pin and Wedge work in tandem to securely and rapidly join Wall or Slab panels, ensuring a tight, reliable, and rigid connection.



Long Pin

Used in conjunction with a wedge, the Long Pin is essential for connecting Joint Pins with Prop Heads and Beams (both Middle and End). This creates a solid, load-bearing assembly for the slab support structure.

Wall Assembly Components



Flat Tie

A critical component for maintaining precise wall thickness. The Flat Tie connects a wall panel to its opposite counterpart, guaranteeing uniform spacing and structural integrity during the pressure of a concrete pour.



PVC Sleeve

This durable PVC sleeve works seamlessly with the Flat Tie. It creates a conduit for the tie, protecting it from the concrete and allowing for clean, easy removal after casting, improving efficiency during the stripping phase.

Vertical Support System

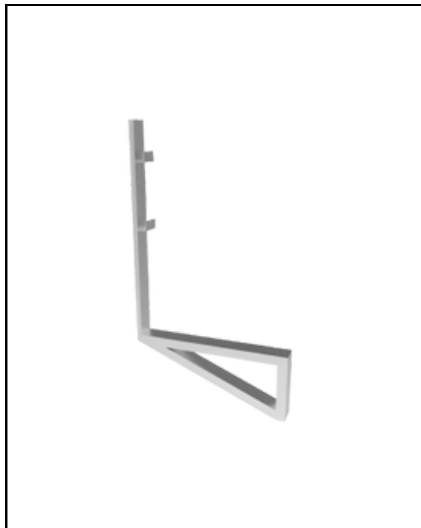


Adjustable Pipe Support (Props)

The backbone of slab support, our heavy-duty, adjustable Pipe Supports (Props) are engineered to bear the full weight of the slab during concrete pouring and curing. Positioned directly under the Prop Heads, they provide robust and reliable vertical support. For maximum safety and structural integrity, they typically remain in place through the casting of two levels.

Type	Length
P1	P-1: 1,800 mm-3,200 mm
P2	P-2: 2,000 mm-3,400 mm
P3	P-3: 2,400 mm-3,800 mm
P4	P-4: 2,600 mm-4,000 mm

FORMWORK COMPONENTS



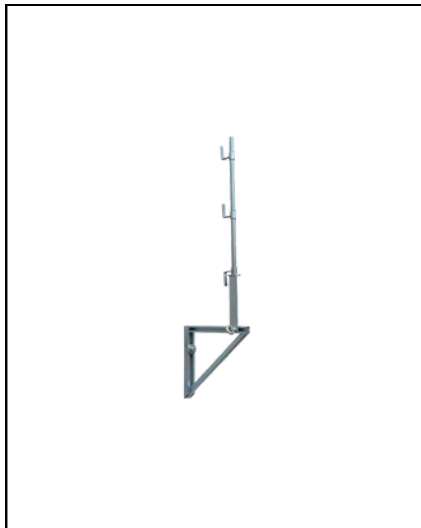
WALL PLATFORM

A robust scaffolding system component, the Wall Platform serves as a secure working platform for personnel. It is specifically designed to be fixed directly to the concrete (Wall/Slab/Elevator) after casting.



SLAB PLATFORM

The Slab Platform, an essential part of a comprehensive scaffolding system, provides a stable and safe working area. It is securely fixed to the concrete (Wall/Slab/Elevator) to ensure reliable support for workers.



ELEVATOR PLATFORM

Integral to our scaffolding solutions, the Elevator Platform offers a dependable and secure working surface. Like other platforms, it is designed for direct fixation to the concrete (Wall/Slab/Elevator) to provide a safe environment for your team.



WALLER-BRACKET & SQUARE PIPE

The Waller-Bracket and Square Pipe are expertly engineered to ensure the horizontal straightness of the formwork during concrete casting. This combination is particularly effective in maintaining precise alignment, especially at the base of your structure.



BOLT, NUT & WASHER

This set of high-quality accessories is crucial for secure formwork installation. The Bolt, Nut, and Washer are designed to act as an embedded anchor, facilitating the precise and stable fixation of panels directly onto the concrete surface.



TIE ROD

The Tie Rod is an indispensable accessory for formwork assembly. It functions as an embedded anchor, enabling the secure and accurate fixation of formwork panels to the concrete surface throughout the construction process.

Reusable Aluminium Formwork



SILVER EDGE
Formwork Pvt. Ltd.

BUILD

FASTER. SMARTER. BETTER.

Build Smarter

Save Big on Every Project!

BUY & SELL WITH SILVER EDGE FORMWORK

Your Trusted Partner for Reusable & Old Aluminium Formwork

At Silver Edge Formwork, we understand the evolving needs of the construction industry. Beyond providing top-tier new formwork components, we offer a dedicated platform for the efficient buying and selling of reusable and old aluminium formwork systems. This initiative supports sustainable construction practices, reduces waste, and offers cost-effective solutions for your projects.

FOR SELLERS: Unlock the Value of Your Used Formwork

Do you have surplus, used, or old aluminium formwork that's no longer needed? Don't let it sit idle. Silver Edge Formwork provides a seamless and transparent process to help you liquidate your assets and recover significant value.

Why Sell with Silver Edge Formwork?

- **Fair Valuation:** We offer competitive and transparent pricing based on the condition and market demand of your formwork.
- **Hassle-Free Process:** From inspection to collection, we handle the logistics, making the selling process simple and efficient for you.
- **Sustainable Practice:** Contribute to the circular economy by giving your formwork a second life, reducing environmental impact.
- **Immediate Returns:** Convert your unused assets into working capital quickly.

We are interested in purchasing a wide range of aluminium formwork, including:

- Wall Formwork
- Slab Formwork
- Column Formwork
- Beam Formwork
- Accessories and Components

FOR BUYERS: Access Cost-Effective & Sustainable Solutions

Looking for high-quality aluminium formwork at a more economical price point? Silver Edge Formwork offers a curated selection of reusable and old aluminium formwork systems that meet rigorous quality checks. This is an excellent opportunity to acquire reliable formwork without the overhead of purchasing new.

Why Buy Reusable Formwork from Silver Edge Formwork?

- **Significant Cost Savings:** Acquire premium aluminium formwork at a fraction of the cost of new systems, optimizing your project budget.
- **Proven Durability:** Aluminium formwork is known for its longevity. Our pre-owned stock is carefully inspected to ensure it retains its structural integrity and performance.
- **Immediate Availability:** Often, reusable formwork can be supplied faster than new orders, helping you meet tight project deadlines.
- **Eco-Friendly Choice:** Support environmental sustainability by utilizing existing resources and reducing the demand for new manufacturing.
- **Quality Assured:** Every batch of reusable formwork undergoes thorough inspection to ensure it meets our standards for usability and safety.

Contact us today to learn more about our buying and selling services, or to get a quote for your used aluminium formwork.

Projects



Kohinoor Group



Tulip Monsella



Suncity



Pride World



Kumar Corp



Ramky Group



Runwal Group



Goyal Ganga Legends, Bavdhan



Capacite Infra



Shree Radha Rani Aqua Garden



Chandak



Ashiyana Group



Aparna Zenon



YOUR FORMWORK EXPERT.

**Construct Smarter. Live Greener.
Achieve Net-Zero.**



SILVER EDGE
Formwork Pvt. Ltd.

SILVER EDGE FORMWORK PVT. LTD.

-  Manufacturing Plant:
Khasra No. 443, Mahadi Chowk, Khubbanpur Road, Raipur
Bahgwanpur, Dist - Haridwar, State - Uttarakhand
-  Branch Office:
Dehradun Road, Uttarakhand
-  Email:
silveredgeformwork@gmail.com

CONTACT

-  **Vivek Kumar Singh**
Co-Founder
+(91) 99588 37507
-  **Madhumeet Kumar**
Co-Founder
+(91) 75032 22889